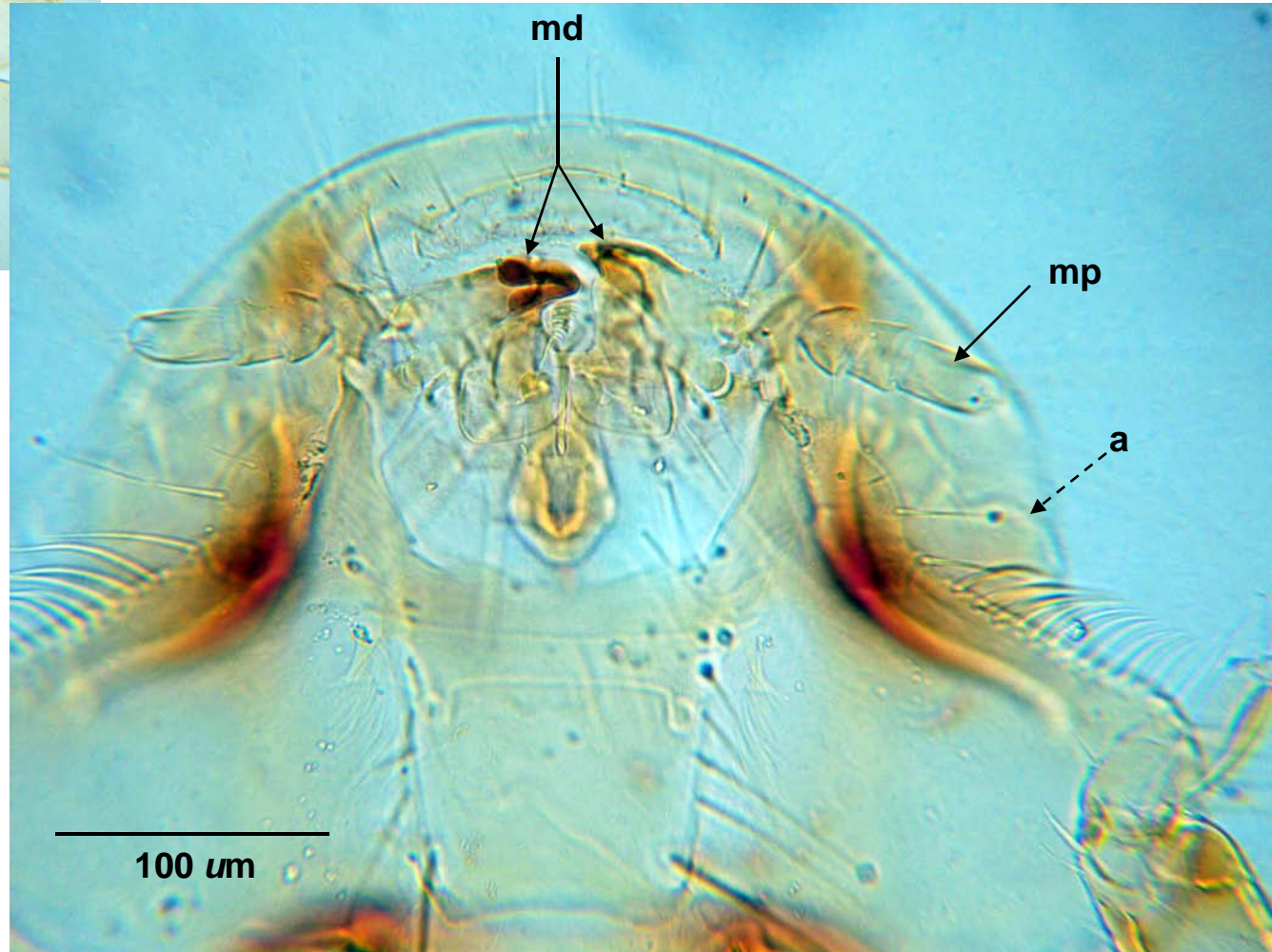
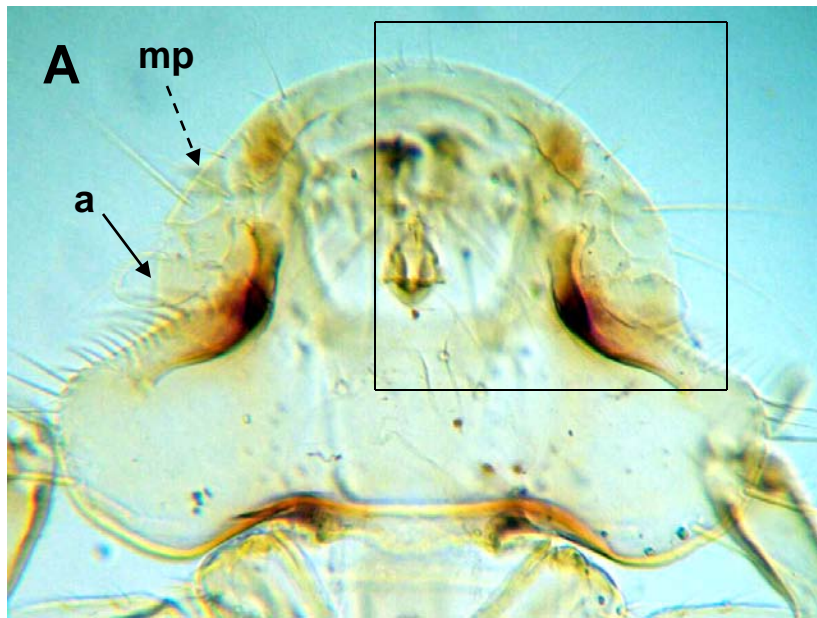


*Myrsidea antiqua*: male (left); nymph (right).  
Note: total body lengths 1.4 mm (male) and 1.0 (nymph).

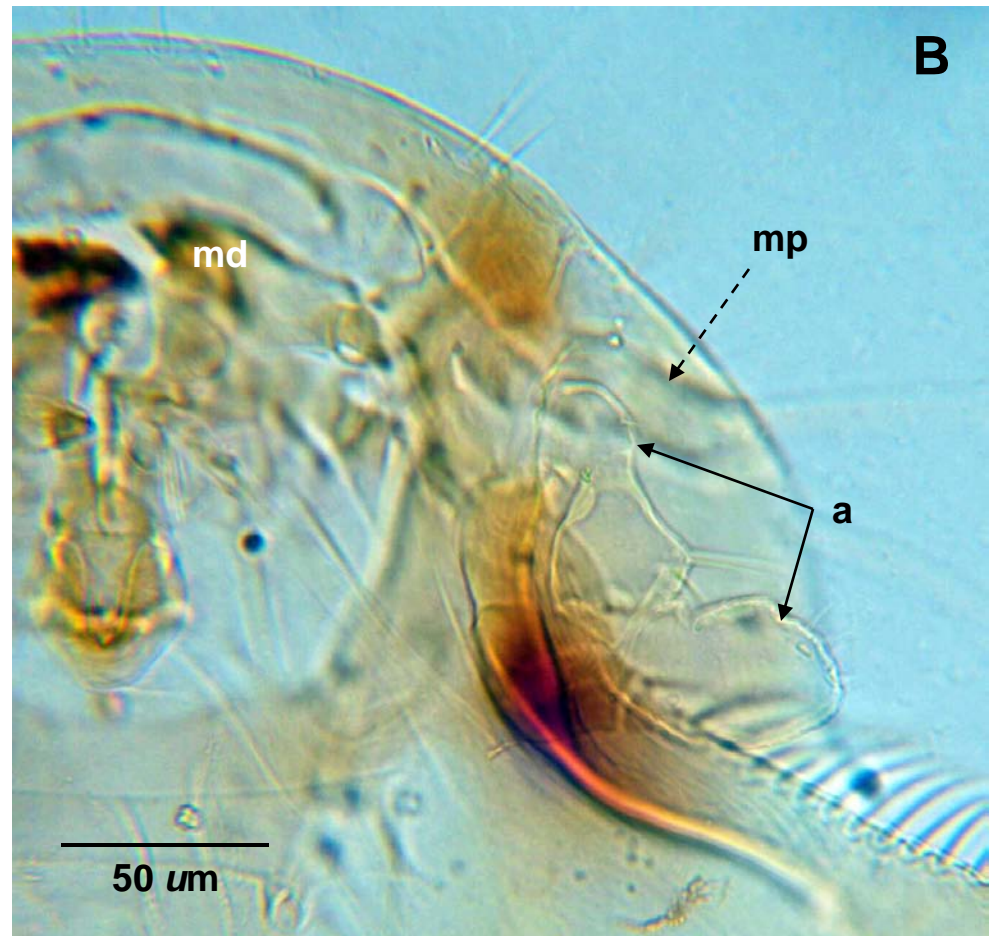


*M. antiqua*: head of male. Legend: a, antenna (not in same plane of focus as maxillary palp); md, mandibles; mp, maxillary palp.





*M. antiqua*: head of male. Legend: a, antenna ; md, mandible; mp, maxillary palp (not in same plane of focus as antenna).  
Box in A enlarged in B.



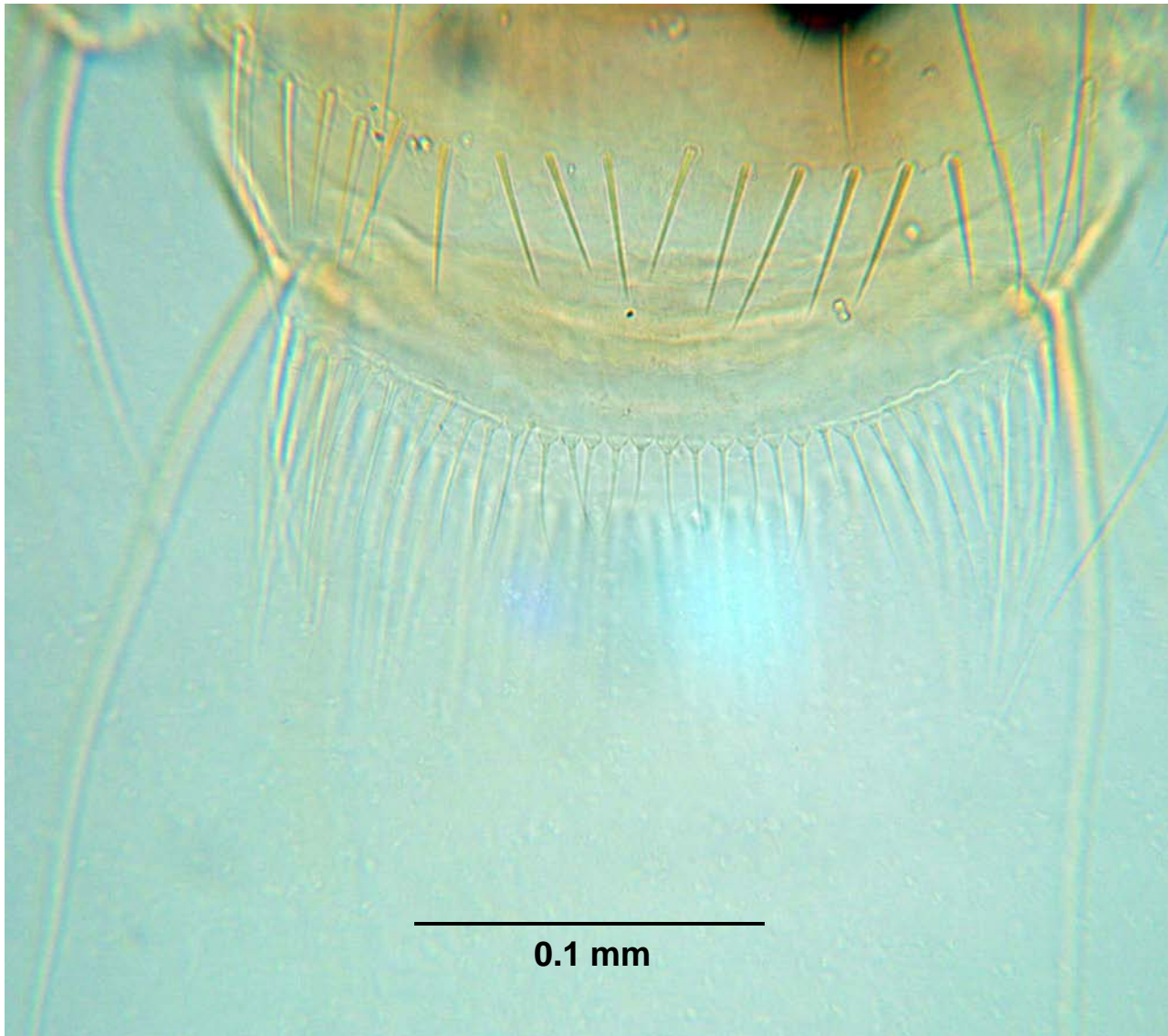
*M. antiqua*: male genitalia.  
Box in A enlarged in B.



*M. antiqua*: male genitalia; everted in B.



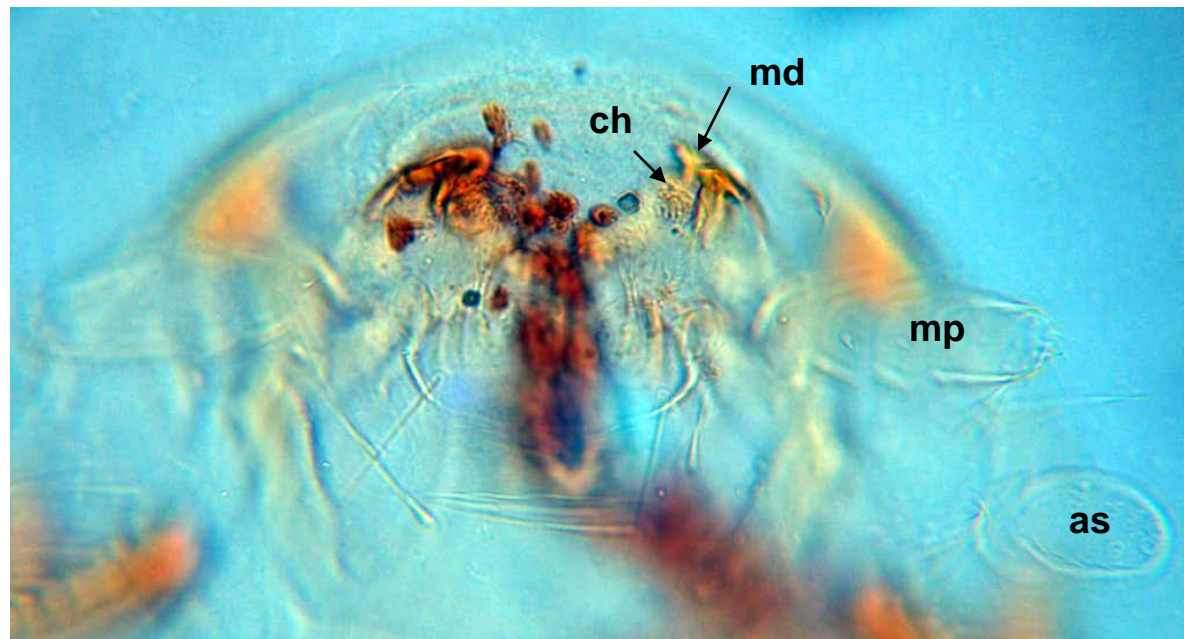
*M. antiqua*, female?, posterior.



*M. antiqua*: head of nymph.



Legend: antennae (dashed arrows); md, mandibles; maxillary palps (solid arrows).



*M. antiqua*:  
head of nymph.

Legend: as, antennal segment; ch, chelicera?;  
g, gut; md, mandible; mp, maxillary palp.

